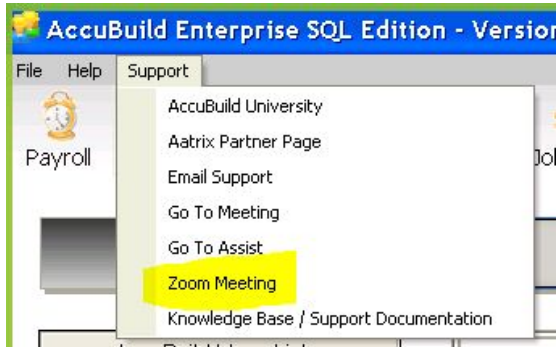


Accubuild 9.6.0.5 Release Notes - 12-28-2017

SUPPORT MENU - New Option for Zoom Meetings

- The Support Menu in the AccuBuild Program has a new menu option for *Zoom Meeting*. This is a new meeting software application that is being used by the AccuBuild Support Team. This new link will allow you to launch the Zoom Meeting software and enter a meeting ID which is supplied by your AccuBuild Support Technician.



PAYROLL - 2018 Payroll Tax Updates for the following states

- California
- District of Columbia
- Illinois
- Indiana - County Tax Updates
- Kentucky
- Maine
- Maryland
- Minnesota
- New Mexico
- New York - State Withholding
- New York - New York City Withholding
- New York - Yonkers Withholding
- Rhode Island
- South Carolina

PAYROLL - 2018 Federal Withholding Tax Table Updates

- A new Tax Bill was signed into law on December 22, 2017 which will be changing the federal withholding rates for 2018. These new tax tables will be issued by the IRS in early February of 2018. Once these tables are released, a new update will be released which will include the new federal tax tables. Until these tables are released, the current tax tables for 2017 are to be used per the IRS.

PAYROLL - New Option for W2 Box 12 for 2017 W-2s

- The Employee List has been updated on the *Fed Tab* for the option '**FF**' for the Box 12 Settings. The new setting '**FF**' is used for 2017 W-2s. As per the IRS W-2 Instructions: A new

box 12 Code FF has been added to report the total amount of permitted benefits under a qualified small employer health reimbursement arrangement (QSEHRA).

This new setting is now available in all 4 Box 12 options (A-D):

AATRIX TAX FORMS - Updates for 2017

- The Aatrix Tax Form integration software has been updated to support the new '**FF**' setting for the W-2 Box 12 when processing W-2s for 2017.

PROJECT MANAGEMENT - Daily Report Bug Fixes

- The Personnel Tab was not being set correctly when the Daily Report was opened. This issue has been corrected.
- When Duplicating a Daily Report and then using the Cancel Option, the associated timecard records for the newly created daily report were not being deleted with the cancel operation. This issue has been corrected.

ADVANCED SETTINGS - Revisions

- The new Advanced Setting features introduced in the 9.6.0.3 release have been updated to enhance the display format and behavior of the lookup fields for cost phases and expense accounts and to make sure the new lookup fields are in order by phase or account number. These advanced settings include the following:
 - "FILTERGLACCOUNTSFORCOSTESTIMATESONLY" - Enhancement to Prevent Coding to Job/ G/L Acct When There is No Estimate Record
 - "FILTERGLACCOUNTSFORCOSTESTIMATESONLY" - Enhancement to Mark GL Accounts as Inactive / Hide from Lists
 - "FILTERGLACCOUNTSFORACTIVEACCOUNTSONLY" - Enhancement to Mark Cost Phases as Inactive / Hide from Lists